

DIST.

COUNTY

ROUTE

POST MILES  
TOTAL PROJECT

SHEET  
NO.

TOTAL  
SHEETS

REGISTERED ENGINEER - CIVIL

PLANS APPROVAL DATE

The State of California or its officers or agents shall not be responsible for the accuracy or completeness of electronic copies of this plan sheet.

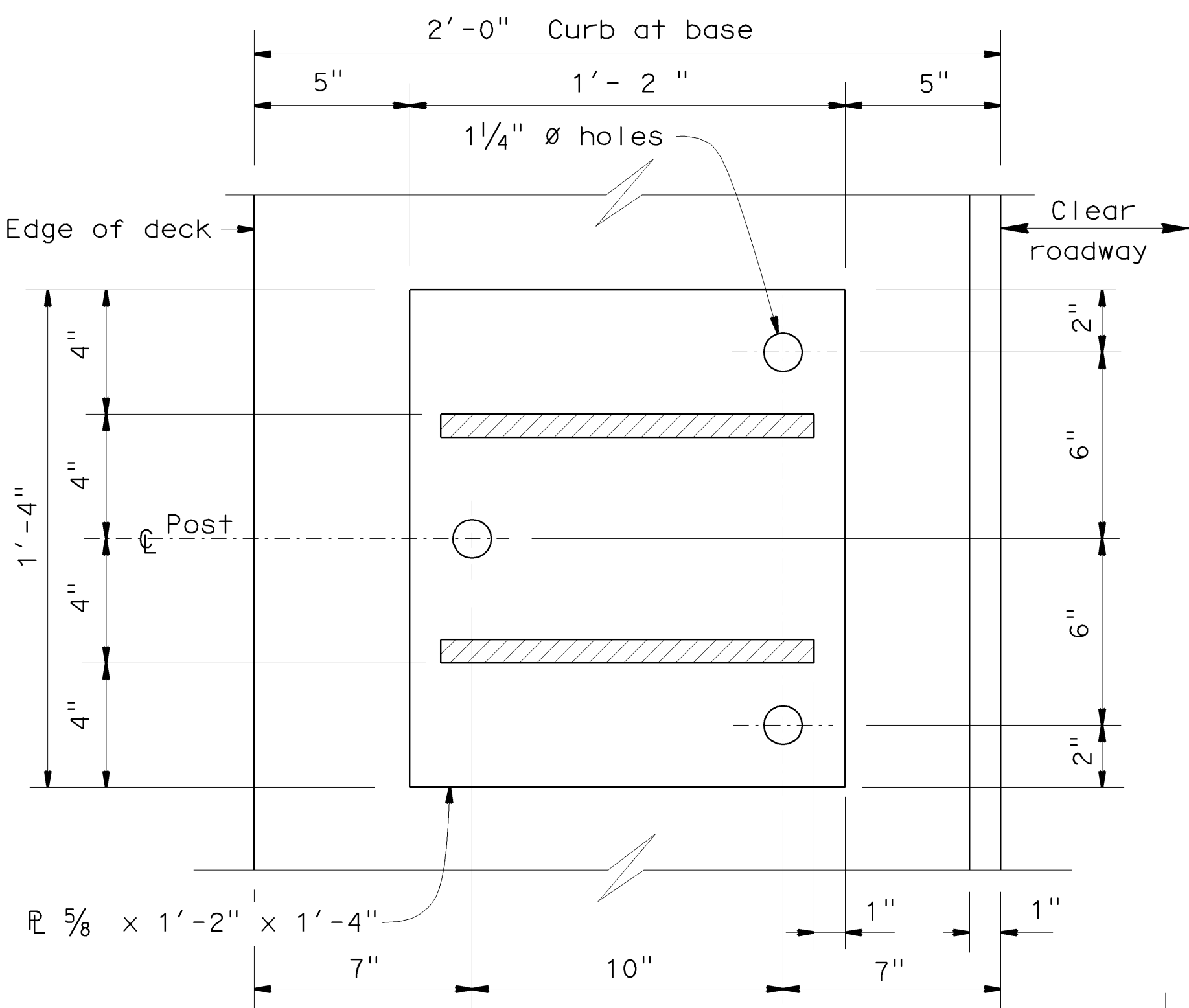
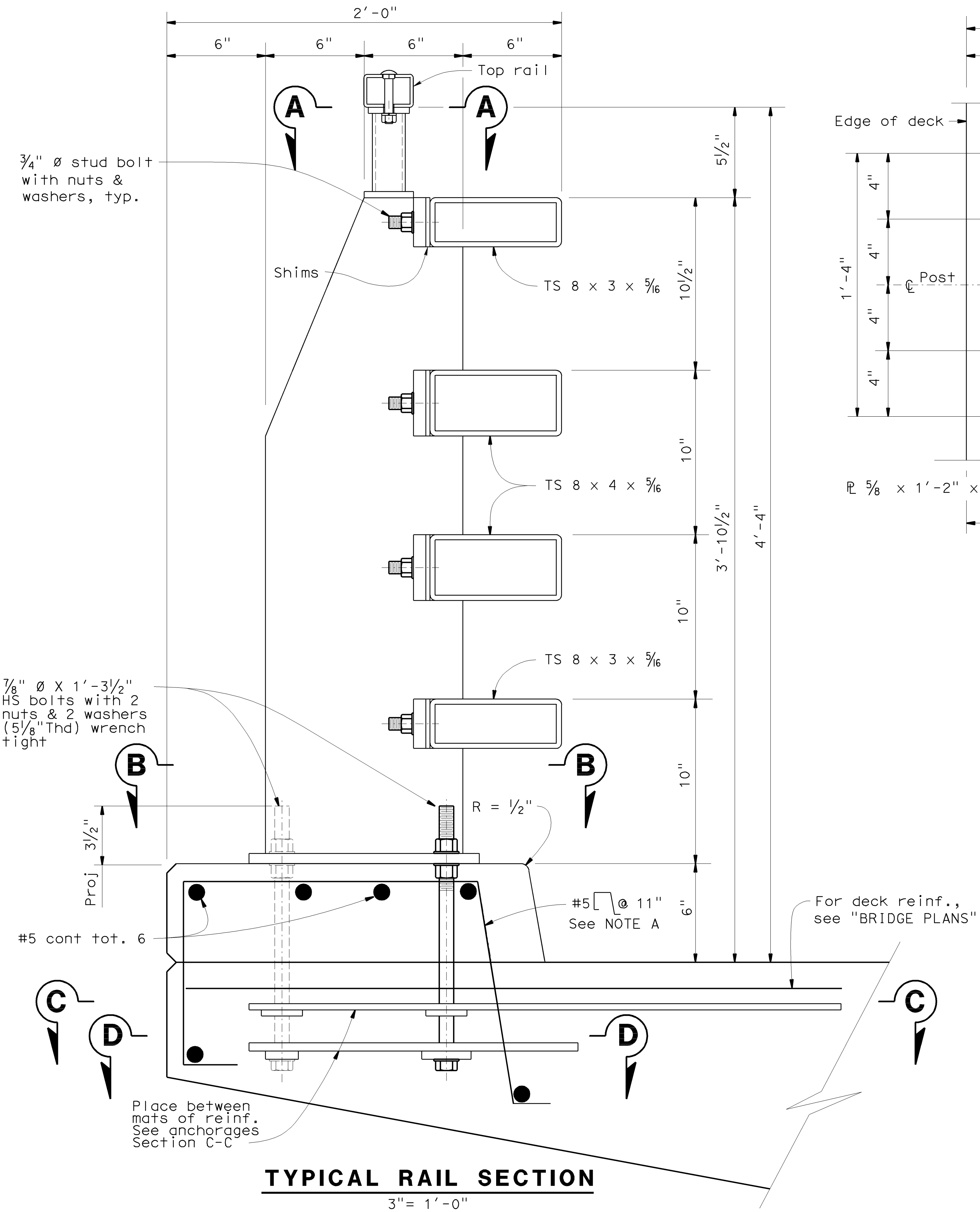
REGISTERED PROFESSIONAL ENGINEER

No.

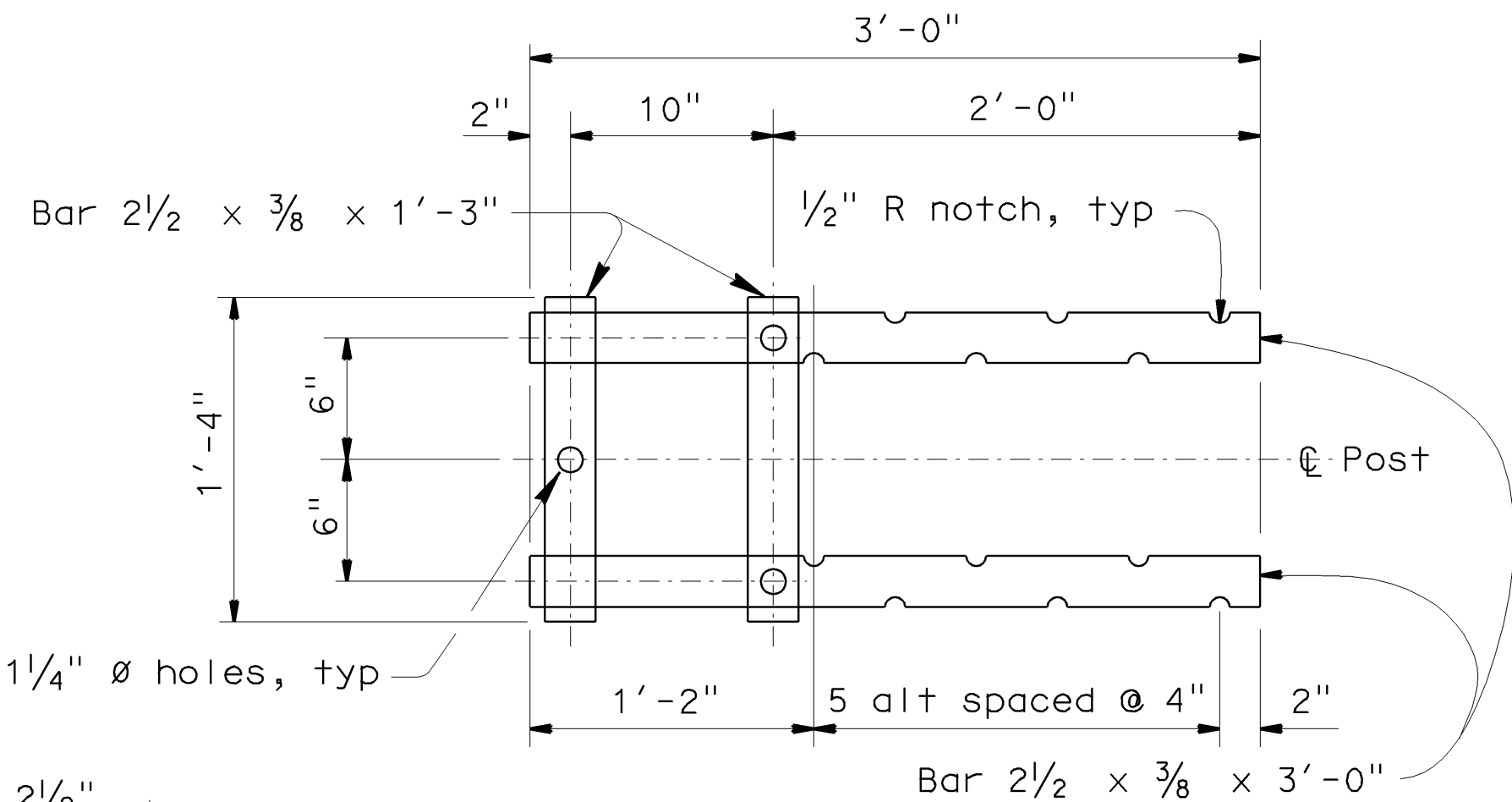
EXP.

CIVIL

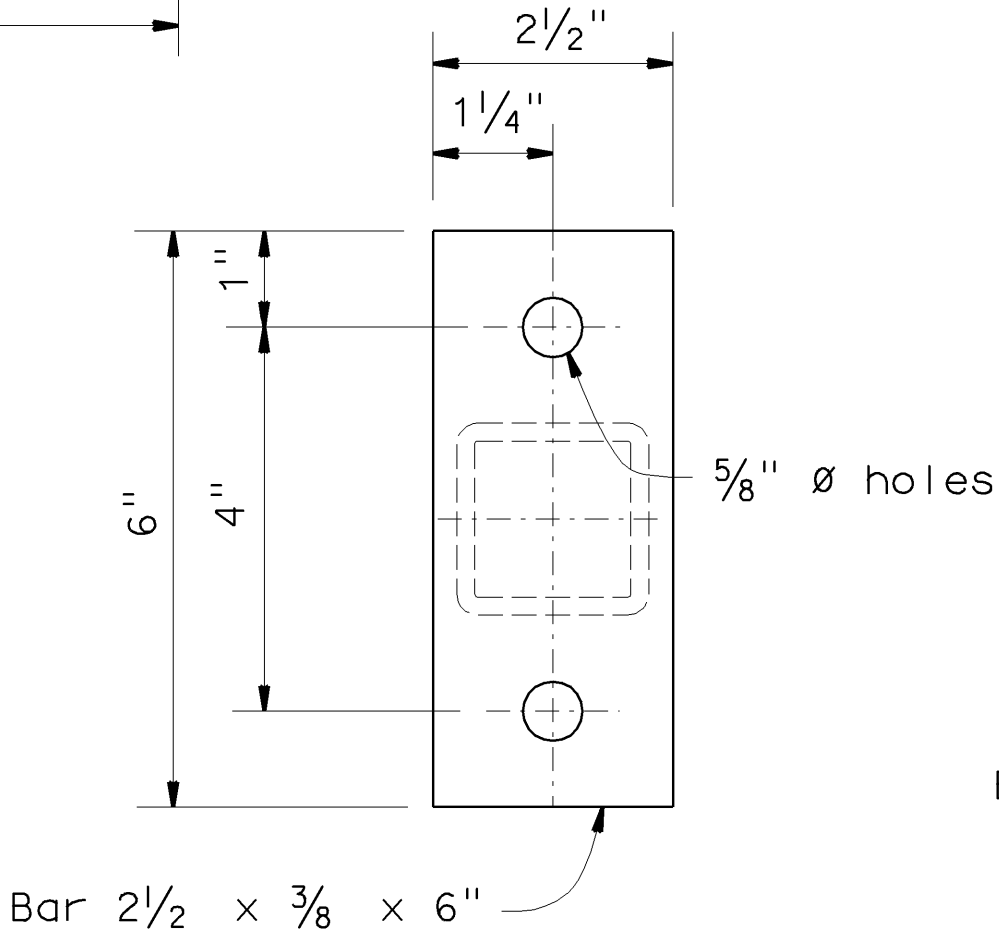
STATE OF CALIFORNIA



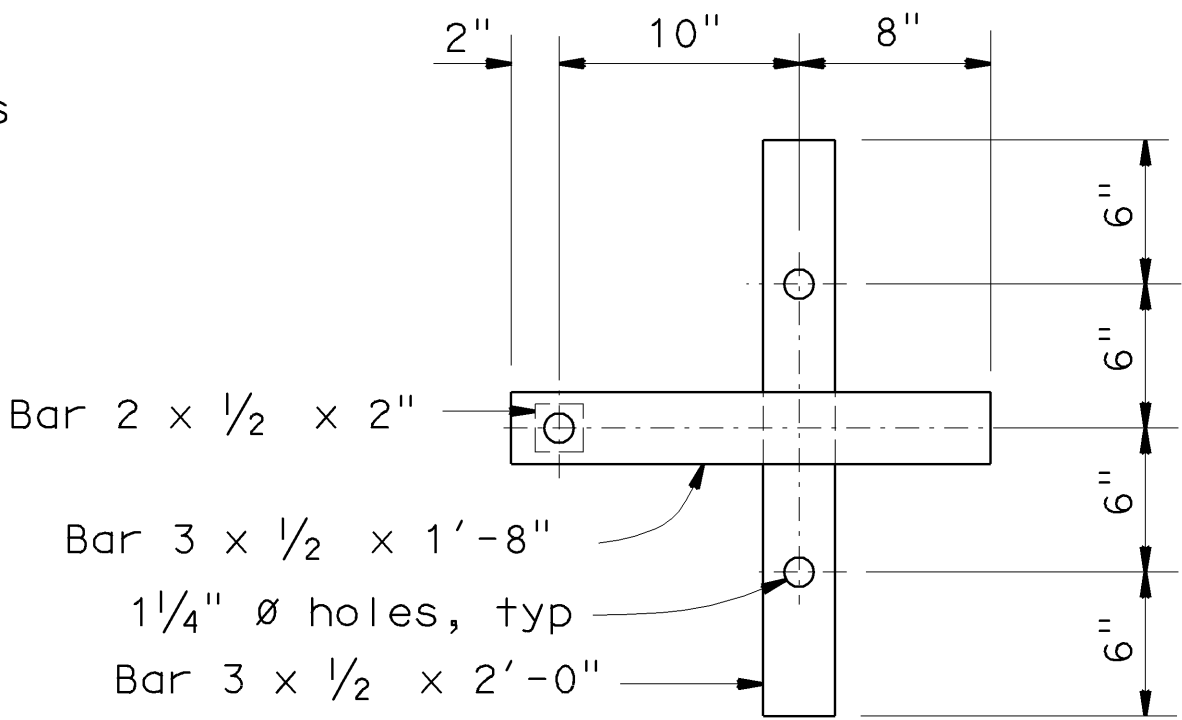
SECTION B-B  
3" = 1'-0"



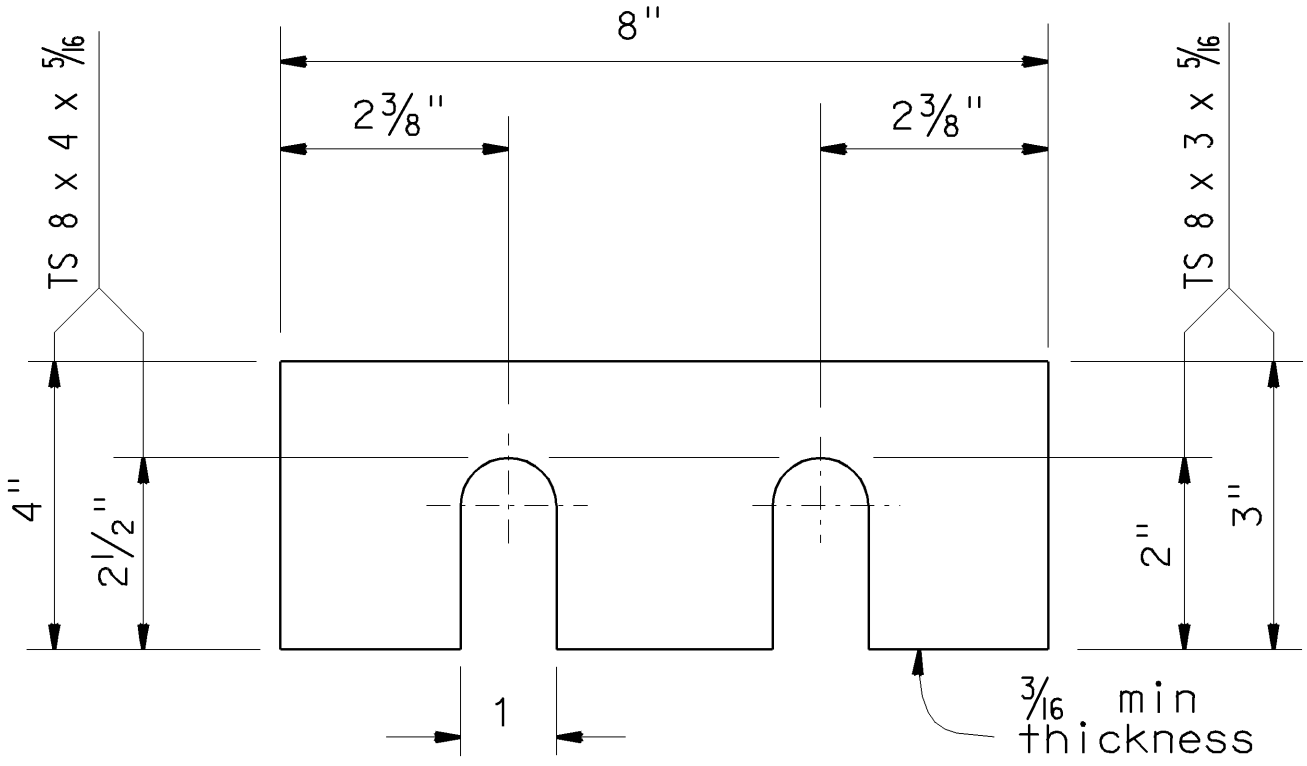
SECTION C-C  
Top Anchorage  
3" = 1'-0"



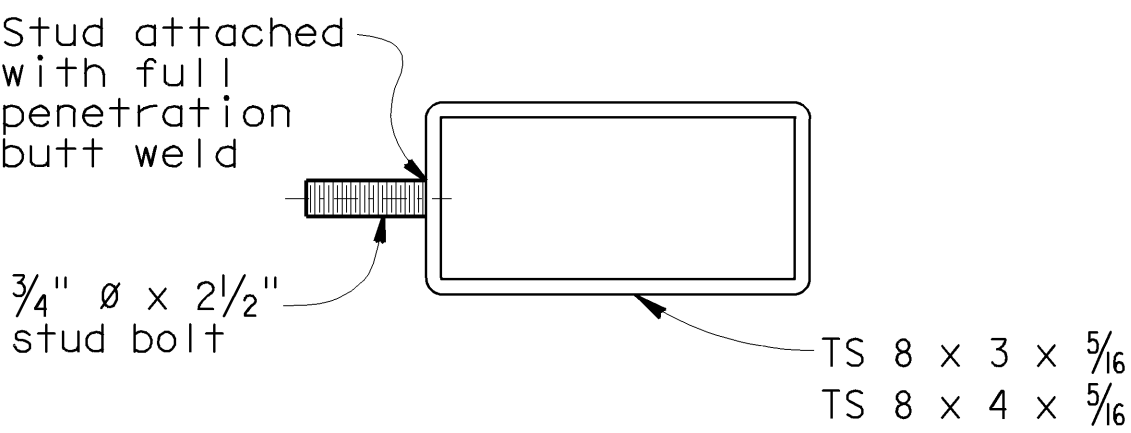
SECTION A-A  
3" = 1'-0"



SECTION D-D  
Lower Anchorage  
3" = 1'-0"



SHIMS REQUIRED FOR ALL RAILS  
6" = 1'-0"



SECTION AT POST  
3" = 1'-0"

STANDARD DRAWING

FILE NO. **xs16-205-1e**

APPROVED BY **T SATTER**  
RESPONSIBLE TECHNICAL SPECIALIST  
APPROVAL DATE **4-27-09**

RELEASED BY **ROBERTO LACALLE**  
RESPONSIBLE OFFICE CHIEF  
RELEASE DATE **4-27-09**

STATE OF CALIFORNIA  
DEPARTMENT OF TRANSPORTATION

DIVISION OF ENGINEERING SERVICES

BRIDGE NO.  
POST MILE

RAILING - STEEL TYPE ST-20S RAIL  
DETAILS NO. 1

ORIGINAL SCALE IN INCHES  
FOR REDUCED PLANS

0 1 2 3

CU  
EA

DISREGARD PRINTS BEARING  
EARLIER REVISION DATES

REVISION DATES (PRELIMINARY STAGE ONLY)

SHEET  
1

OF  
4

DATE PLOTTED => 06-MAY-2009 07:47  
USERNAME => rfwu  
xs16-205-1e.dgn